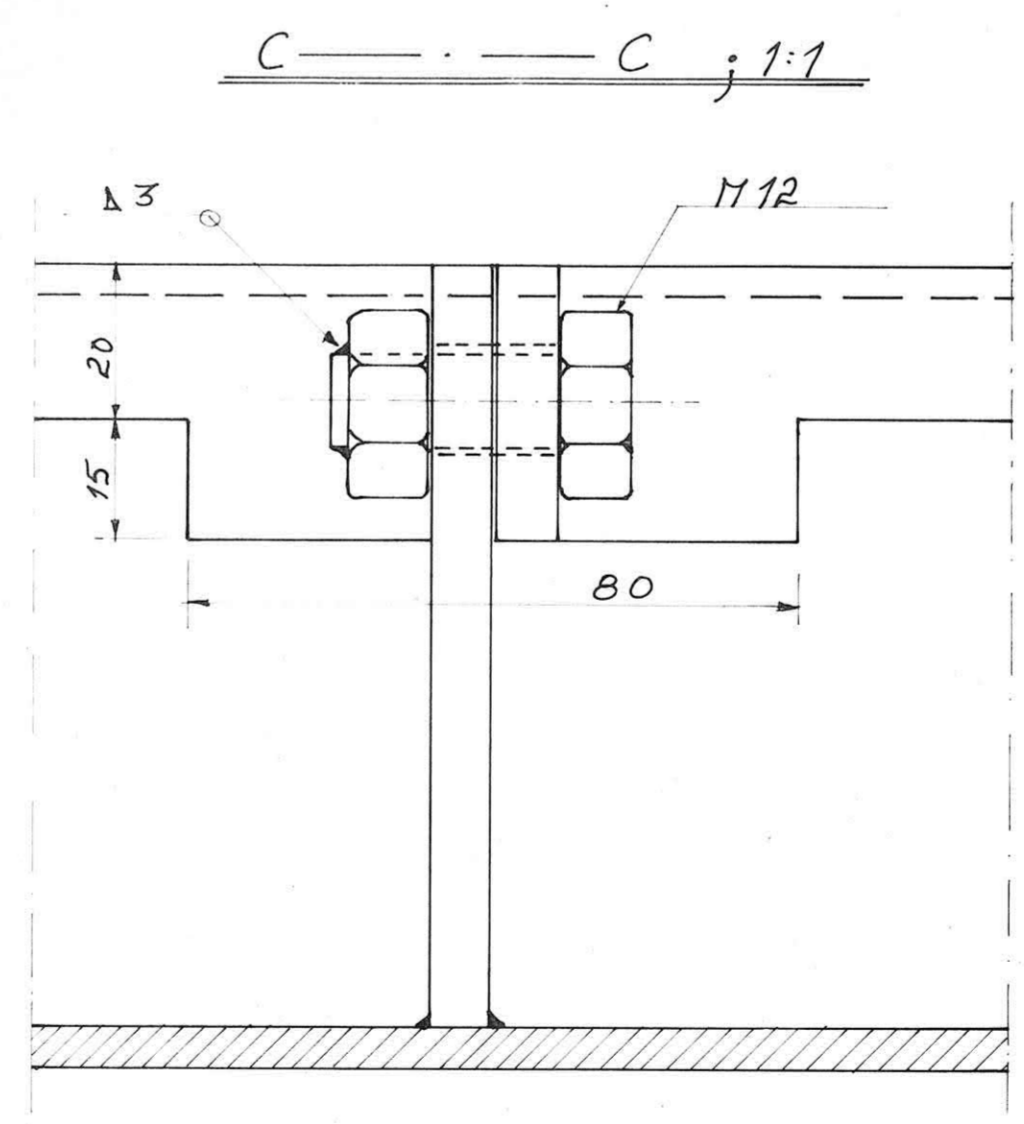
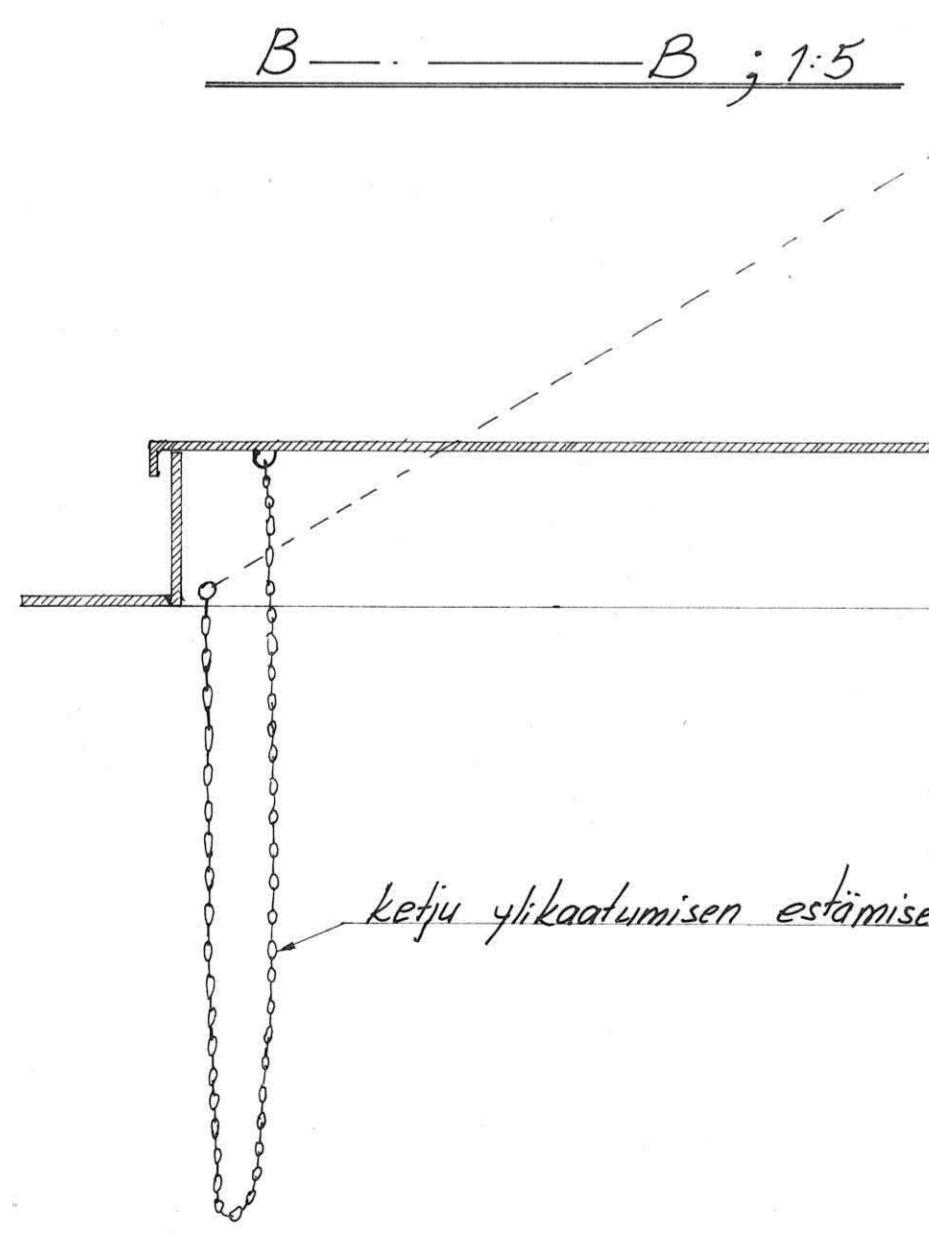
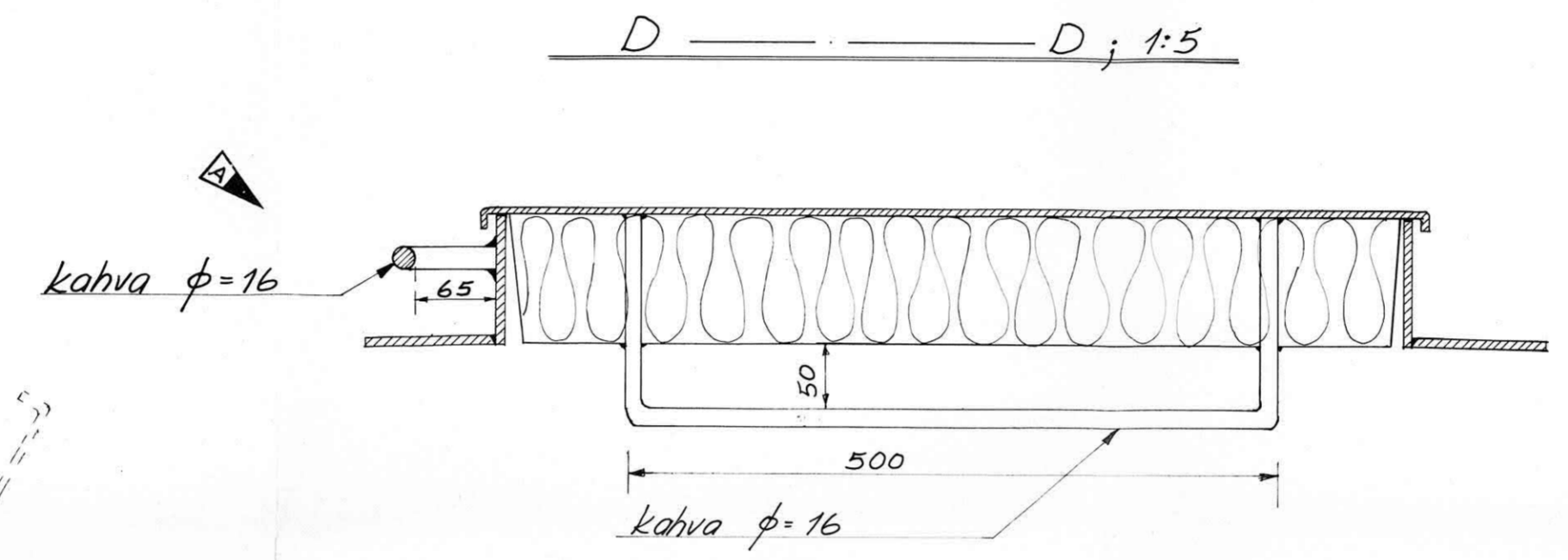
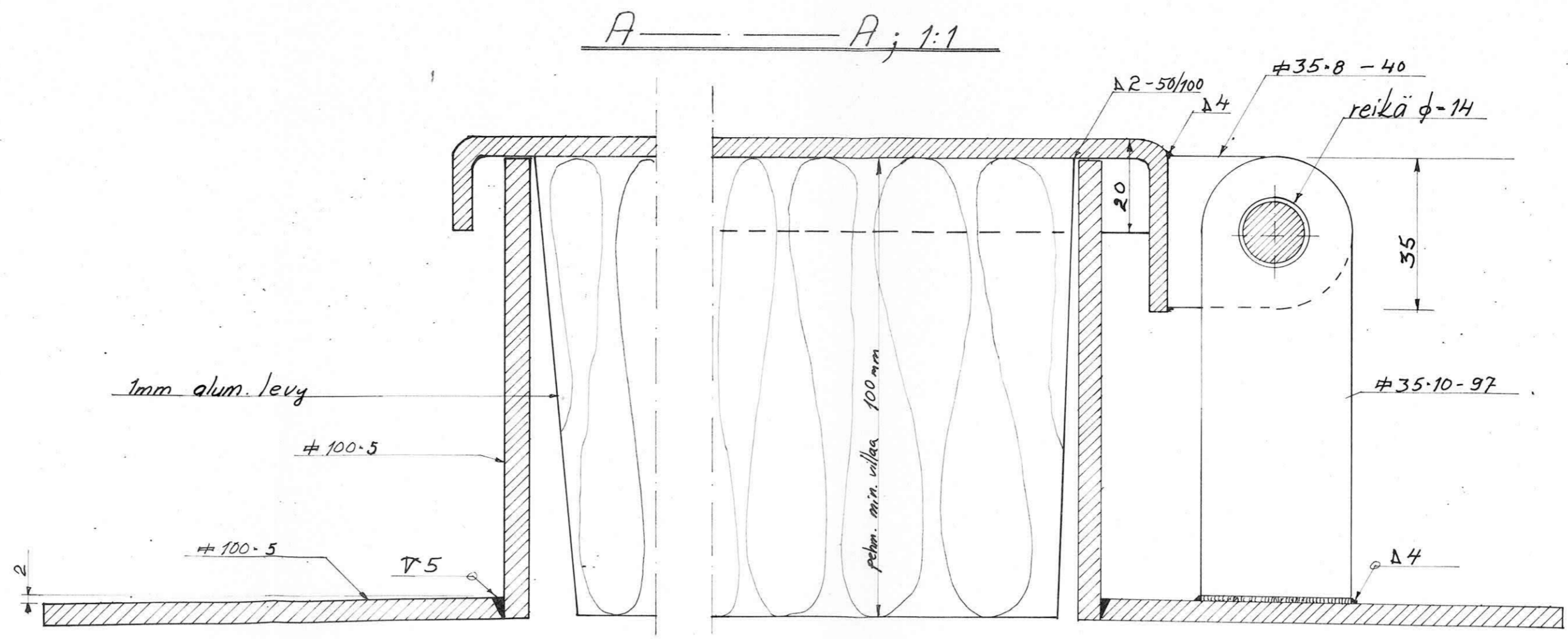
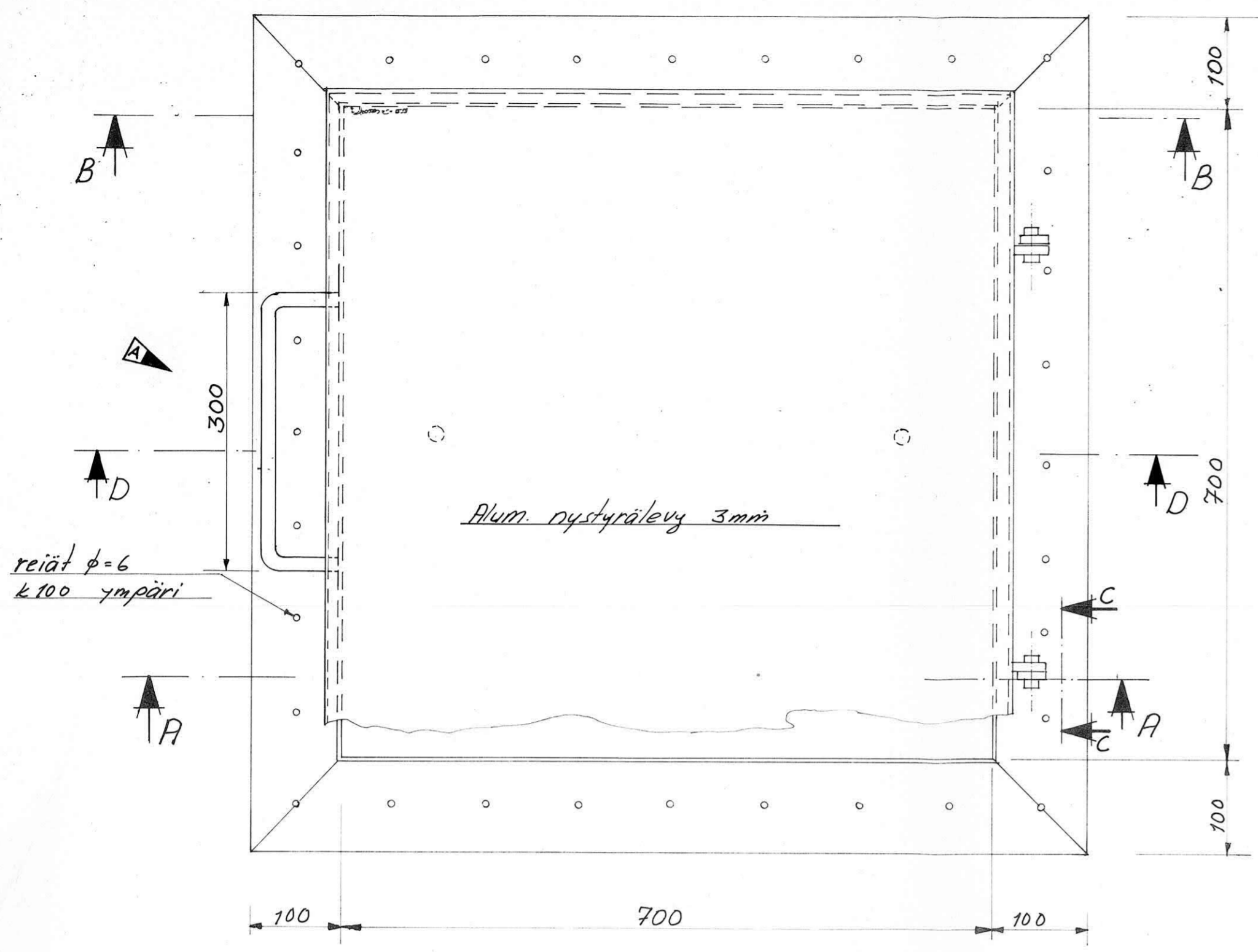


Kaasi ; 1:5



Teräs: Fe 37 B, luukun kehys
 Ruostesuojaus: maalaamalla
 Luukku = alumiinia

lisätty kavva

1978 -12-05

Uudisrakennus		TYÖPIIRUSTUS	
ILMAJOEN KUNTA		KULKULUUKKU VESI-	
VESITORNI 1300 m ³		KATOLLE	
ILMAJOKI		1:5	
11125 A		1:1	
VESI-SEPPO		4.12.77	
ILMAJOKI VANTAA		RR	
Pöytäkirja		16.11.78	